



MRSI Annual Report 2009

“To be the leader of quality and affordable housing and support services for people with mental or emotional disabilities in the communities of West Central Ohio.”



<http://www.mrsinc.org>

Who We Are...

MRSI is a private, non-profit agency that has over thirty years of experience in the intellectual disability field. MRSI has over seventy employees in the Auglaize, Darke, Mercer and Van Wert area. We are a locally based agency with offices in Mercer and Van Wert Counties. Our business plan dictates that we will remain a regional service provider. This ensures that our agency will remain large enough to serve you - small enough to know you.

Services Provided by MRSI...

Adult Day Services

Recreation and Leisure

Mental Health Housing

Community Support Services

Licensed Group Homes

Respite Care Services

MRSI Board of Directors..

Pat Houseworth
President
pat.houseworth@gmail.com

Ron Adams
Vice President
rtladams@bright.net

Lin Wilken
Secretary/Treasurer
bogows@verizon.net

Donna Post
Trustee
dpostlaw@verizon.net

Janet White
Trustee
pjwhite@bright.net

2009 At a Glance..

As the year comes to an end, it is a good time to reflect on our accomplishments. It has been a very challenging year with the most serious economic crisis in the United States in the last 70 years. The federal government quickly reacted by passing a 787 billion-stimulus package. A good portion of stimulus dollars were passed on to the states to help support Medicaid services. Without this Federal influx of dollars, we would not be able to provide services at the level that our consumers require. The economy is recovering slowly, but there is still concern for the future. A snapshot of the past year would indicate that MRSI has weathered the economic storm thus far. Though we have seen only a small growth, we have delivered more services to our present clientele base. The following are some of MRSI's highlights over the past year:

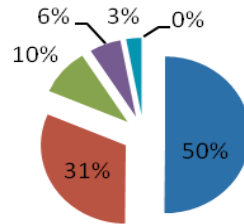
- We are providing services for 60 individuals with developmental disabilities in four counties. This remains unchanged from last year.
- MRSI is providing Adult Day Services in Mercer County for eight of our Mud Pike Residents and two additional individuals with Medicaid waivers. This number remains unchanged from last year, but we have increased the number of service units provided and the ADS program is in the black for the first time.
- We continue to provide safe and affordable housing for 18 individuals and two families with mental illness. The Ohio Department of Mental Health has recognized our program as a model-housing agency. Our occupancy rate for the year was 99%. This was an increase of 3%.
- MRSI now employs 40 full-time employees. This is a decrease of 2 from the past year. We currently employ 27 part-time employees. This is a decrease of 1 employee from the previous year.
- MRSI has an annual budget of 1.87 million dollars. This is an increase of 110,000 dollars from the past year.
- The Drop in Center in Van Wert has a membership of 1 to 102 clients. This is an increase of 37. They provide an array of supports for people with mental health problems.
- MRSI hosted two fundraising events and added \$5,439.74 to the endowment fund at the Mercer County Civic Foundation. This was a decrease of \$1,160 from the previous year.
- Our computer server was upgraded permitting our managers to log in to our management software programs from anywhere having web access. This will help them do their jobs more efficiently.
- We redesigned our web site and included additional details about our services on it.
- We started measuring our turnover rate and discovered that we do a great job of keeping our employees. We have an average turnover rate of 4% compared to the 40% average for our industry.
- Our services have had many compliance reviews and surveys from federal, state, and local sources and have all passed with flying colors.
- MRSI remains the second largest locally based not-for-profit 510(c)(3) in Mercer County behind the Cancer Network treatment center.

None of these accomplishments would have been possible without the dedication and efforts of the many outstanding employees that have made MRSI a leader in developmental disability services and mental health housing in West Central Ohio.

MRSI Financial Information..

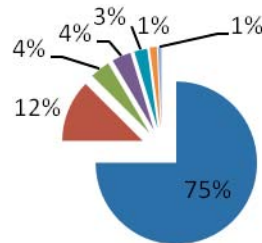
Revenue Funding By Sources

- Group Homes
- Supported Living
- Housing
- Adult Day Services
- Investment Income
- Other Income

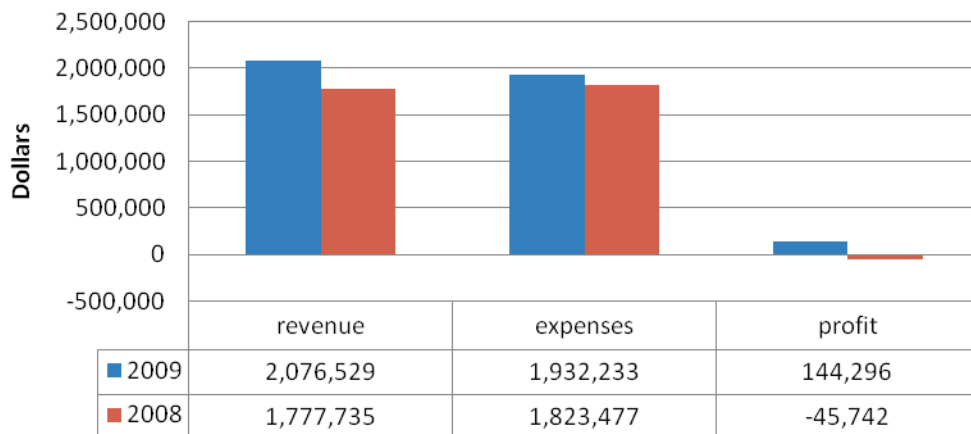


Expenses by Category

- Salaries and Payroll Taxes
- Other
- Depreciation
- Utilities
- Resident Care Supplies
- Travel Expenses
- Professional Fees



Income Statement Analysis



MRSI Locations..



Corporate Office
420 S. Sugar Street
Celina, OH 45822
419-586-4709



Regional Office
4874 Mud Pike
Celina, OH 45822
419-586-1432



Regional Office
500 Augustine Drive
Van Wert, OH 45891
419-238-1019



Challenged Higher Club House
407 N. Franklin Street
Van Wert, OH 45891
419-232-4584